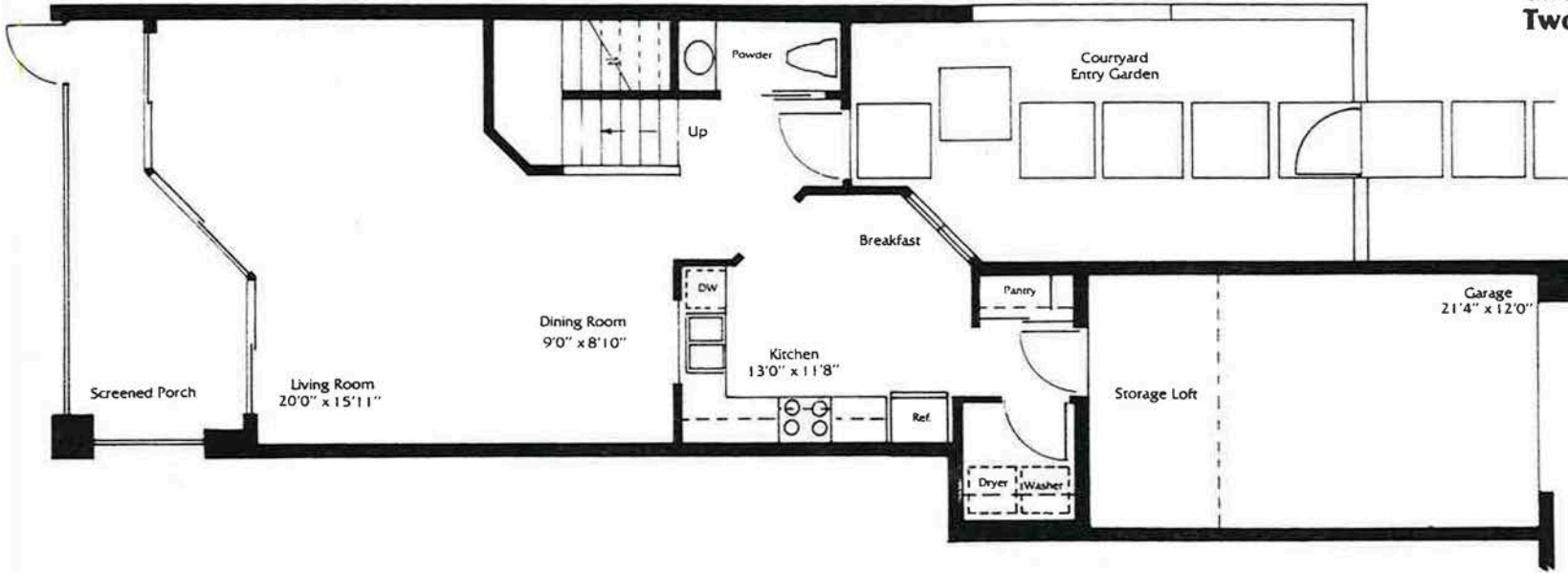


# The Lakes – Model A Two Bedrooms, Two and One-Half Baths

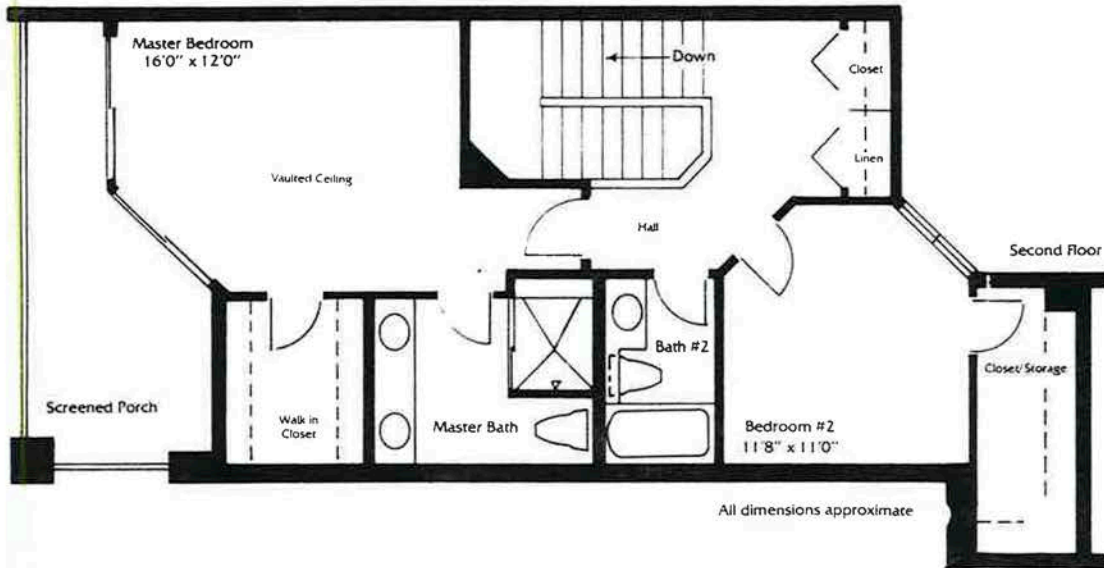


## Exterior Features:

- Lush tropical setting with shimmering lakes
- Innovative contemporary design
- Private entries with gates
- Landscaped courtyards
- Screened verandas or balconies
- Private garage with automatic door opener
- Clubhouse with 50-foot lap pool, whirlpool, sun deck, barbeque, sauna and exercise studio
- 24 Hour security gate house at Main Entrance
- Illuminated parking areas
- Private streets
- Underground utilities
- Additional parking areas for guests

## Interior Features:

- Roomy kitchens with top-line G.E. appliances
- Range with self-clean oven
- 19 cubic foot refrigerator with ice maker
- Convenient microwave
- Garbage disposal
- Whisper clean dishwasher
- Separate laundry room which features top-line G.E. washer and dryer
- Some models have cozy dens and family breakfast areas
- Dramatic cathedral or vaulted ceilings on the second levels
- Custom kitchen cabinets
- Sound resistant concrete floors
- Custom bathroom vanities
- Designer ceramic tile floors
- Luxury wall to wall carpeting
- Custom lighting fixtures
- Marble window sills
- Prewired telephone outlets
- Master T.V. outlets wired for cable
- High efficiency central air conditioning and heat
- Individual circuit breaker service panel
- Prewired for Security System



All dimensions approximate

# The Lakes

at PGA National

JeffRealty.com©