



MEMBERSHIP OPPORTUNITIES

at Jonathan's Landing



**JONATHAN'S
LANDING**
— GOLF CLUB —





**JONATHAN'S
LANDING**
— GOLF CLUB —

real PEOPLE.
real GOLF.
in the HEART OF JUPITER.



Table of CONTENTS

5 WELCOME

OUR AMENITIES

6 DELECTABLE DINING

7 EXCEPTIONAL GOLF

8 RACQUETS CENTER

9 WELLNESS CENTER

OUR MEMBERSHIPS

11 GOLF

12 EXECUTIVE

13 RACQUETS

14 HOUSE

15 CONTACT





Welcome to the JL Experience

WHERE MEMBERS MATTER MOST

Here at Jonathan's Landing Golf Club, our Members are our priority. We hope you find our Membership Opportunities suitable to your lifestyle and feel at home as you enter our doors.

For more information regarding Club Membership, please contact Kirstin Snyman, Director of Membership & Marketing, at 561-744-4250.





DELECTABLE *Dining*

Specially Crafted Menus *at your Fingertips*



With floor-to-ceiling windows that feature the panoramic views of the Village Golf Course and practice facilities, Pub 1696 is the ultimate destination for Club events and pre-dinner cocktails in our Nickaleer Lounge. This casual, inviting venue is host to Sunday Brunch, Happy Hour, and much more.



THE LANDING

Enjoy dinner indoors or outside on the patio overlooking the lake. Later in the evening, have a seat by the cozy fire pit while enjoying a cocktail or swing by the sports bar to watch your favorite game. The Landing offers an ever-changing menu including Signature Cocktails, Nightly Specials & Fish Board, and in-house desserts made by our Pastry Chef.



From fresh salads and specialty sandwiches to build-your-own wood-fired flatbreads, stay for lunch in The Perch after a round of golf at Old Trail. Savor a refreshing cocktail on our spacious wrap-around veranda which presents scenic, natural views over our golf courses and preserve.

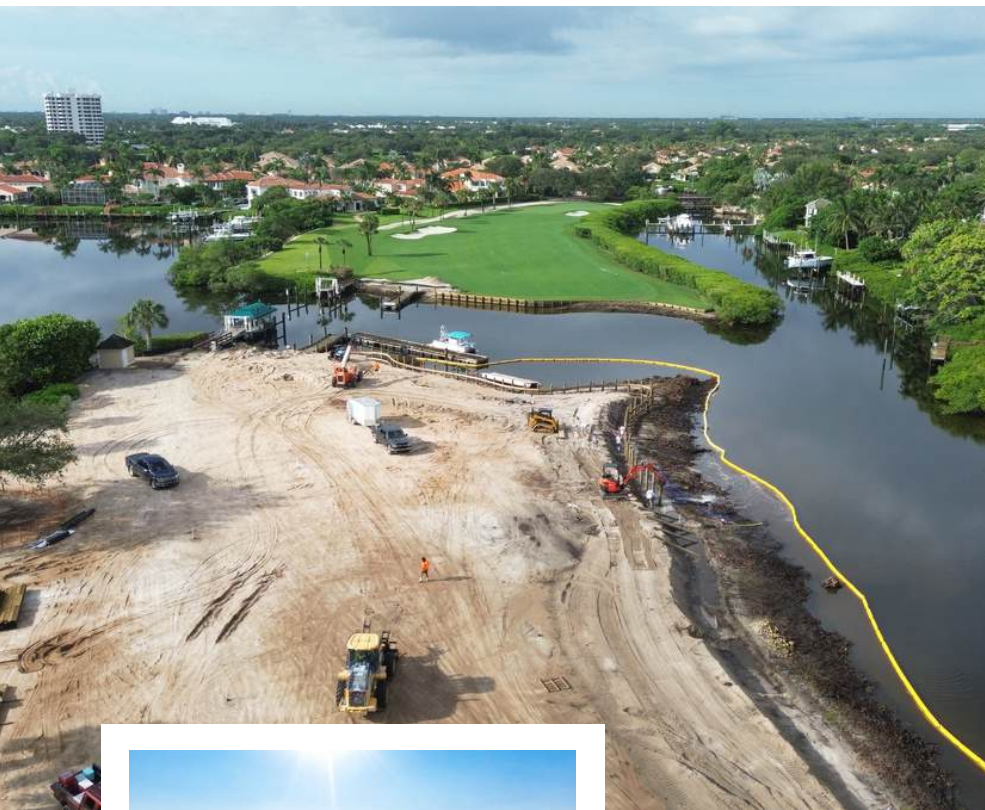


EXCEPTIONAL GOLF

Our two properties, *The Village* and *Old Trail*, create distinctly unique atmospheres for both the committed player and the social golfer at our three championship golf courses

The Village

Currently undergoing a renovation by Beau Welling Design, the Village course sits just a few miles east of the Atlantic Ocean in our gated, golf cart-accessible community. Our signature 17th hole features a one-of-a-kind ferry boat ride over the scenic intracoastal waterway. The new Village Course will be ready for play in late 2024.



The Match



In February 2021, Hanse Golf Course Design broke ground on an original design, the Match course (above). Gil Hanse and Jim Wagner built a "course and world class practice facility that [is] fun, different, and not just another South Florida style golf course."

The Match course at Old Trail offers a new challenge with every round. Unique tee box locations set the course up for thrilling match play that begs each golfer for creative and athletic shots.

Named #4 on Golf Digest's 2023 Best Transformation

The Medal

Nestled among the rolling terrain of the nature preserves, the Medal course at Old Trail provides a pure golf experience. This golfer's paradise has been described as one of Tom Fazio's best designs and is revered as Jonathan's Landing's true championship course, recently hosting the 2019 Florida Amateur.



RACQUETS

Tennis & Pickleball

Racquet enthusiasts will enjoy an active schedule on ten Har-Tru tennis courts and three Pickleball courts, with matches and inter-club leagues in both programs.

Our Racquets calendar is full of competitive and social play, including glow-in-the-dark events, invitational tournaments, and battles between the pros.

Our tennis instructors offer private lessons for those seeking to improve their games, as well as racquet stringing and the latest tennis and pickleball apparel in our Racquets Shop.





WELLNESS CENTER

Our 3,858 square foot fitness and workout facilities include free weights, stretching areas, cardio equipment with TV monitors and an exercise studio. Group fitness and one-on-one classes are available weekly from our certified personal trainers. After your workout, enjoy our private steam rooms and peaceful locker rooms. The Wellness Center is located next to our newly-renovated Spa and overlooks our tennis and pickleball courts.



Relax with us

Experience true relaxation in our newly renovated Spa. Our licensed massage therapists and estheticians offer their expertise to help you look and feel your best. Extensive Spa offerings include massages and facials, manicures and pedicures, and hair cuts and treatments by our professional staff.



**JONATHAN'S
LANDING**
— WELLNESS —



**JONATHAN'S
LANDING**
— GOLF CLUB —

Memberships



GOLF MEMBERSHIP

With a mix of tournament and social play, this Membership is designed for both the avid player and the weekend golfer.

Amenities

Three Championship Courses: Unlimited rounds on The Village, Match and Medal golf courses

Practice Facilities: Unlimited use of the JL Village and Old Trail ranges and short game areas including chipping, pitching, putting and bunker play.

Preferred Tee Times: Reserve tee times up to 7 days in advance

League Play: Participation in Men's and Women's 18-Hole and 9-Hole Associations including special events and tournament play

Racquet Play: Unlimited use of the Tennis & Pickleball Center, including 10 Hydro-Grid Har-Tru® tennis courts and 3 standalone pickleball courts

Wellness Programs: Unlimited use of the JL Wellness Center, group fitness classes, and personal training services, as well as access to the newly renovated Spa with extensive services

Social Events: Dining at all restaurants with an active social calendar

Reciprocity: Summer Reciprocity with other prestigious Golf Clubs in the area

Available to both residents and non-residents



EXECUTIVE MEMBERSHIP

*Designed for both the avid player and the weekend golfer
under 50 who enjoy tournament and social play*

Amenities

Three Championship Courses:

Unlimited rounds on The Village, Match and Medal golf courses

Practice Facilities: Unlimited use of the JL Village and Old Trail ranges and short game areas including chipping, pitching, putting and bunker play.

Preferred Tee Times: Reserve tee times up to 7 days in advance

League Play: Participation in Men's and Women's 18-Hole and 9-Hole Associations including special events and tournament play

Racquet Play: Unlimited use of the Tennis & Pickleball Center, including 10 Hydro-Grid Har-Tru® tennis courts and 3 standalone pickleball courts

Wellness Programs: Unlimited use of the JL Wellness Center, group fitness classes, and personal training services, as well as access to the newly renovated Spa with extensive services

Social Events: Dining at all restaurants with an active social calendar

Reciprocity: Summer Reciprocity with other prestigious Golf Clubs in the area

Available to both residents and non-residents

RACQUET MEMBERSHIP

Designed to provide a competitive outlet for both Tennis and Pickleball players



Amenities

Racquet Play: Unlimited use of the Tennis & Pickleball Center, including 10 Hydro-Grid Har-Tru® tennis courts and 3 standalone pickleball courts

Competition Play: Full tennis and pickleball event schedules including clinics, mixers, competitive play and more.

Night Play: State of the art LED lights on both tennis and pickleball courts

Wellness Programs: Unlimited use of the JL Wellness Center, group fitness classes, and personal training services, as well as access to the newly renovated Spa with extensive services

Social Events: Dining at all restaurants with an active social calendar

Available to both residents and non-residents



HOUSE MEMBERSHIP

*Designed for Members who enjoy an active social club lifestyle
featuring a variety of events and unique dining experiences*



Amenities

Wellness Programs: Unlimited use of the JL Wellness Center, group fitness classes, and personal training services, as well as access to the newly renovated Spa with extensive services

Social Events: Dining at all restaurants with an active social calendar. Specialty events and theme nights, including Wine Tastings, Lobster Boils, Chef's Demos and much more!

Dining: A welcoming lounge perfect for cocktails and camaraderie with friends and family.

Activities: Bridge Play, Book Club, Mah Jongg, Canasta and many other social activities



FIND YOURSELF IN
the SWEET SPOT
for the GOOD LIFE
AT JONATHAN'S LANDING

*For more information
regarding Membership,
contact Kirstin Snyman,
Director of Membership &
Marketing,
at 561-744-4250.*





JONATHAN'S LANDING

— GOLF CLUB —

