

All Dimensions Approximate

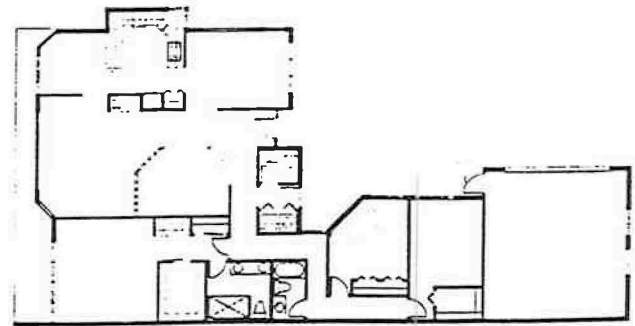
The Clifton - One Story Two Bedrooms Two and One-Half Baths

Exterior Features:

- 24 Hour manned gate houses at PGA National entrances
- Private driveway
- 2 Car garage
- Lush Florida landscaping
- Architecturally coordinated
- Ground utilities
- Sidewalks
- Street lighting

Interior Features:

- Luxury wall to wall carpeting
- Optional swimming pool
- Ceramic tile flooring
- Vaulted ceiling in living room, dining room and foyer
- Walk-in closets
- European style mica or wood kitchen cabinets
- Stained raised panel hardwood entry door
- Self cleaning range
- Frost free refrigerator with icemaker (ice and water dispensed through door)
- Garbage disposal
- Full size washer and dryer
- Microwave oven
- Automatic dishwasher
- Double stainless steel sink
- Separate make-up in Master Bedroom
- Cultured marble bathroom vanities
- Antique brass trim in Powder room
- Chrome trim in bathrooms
- Glass shower enclosures
- Cased marble bathtub in Master Bath
- Louvered Bi-fold doors
- High efficiency central air conditioning and heat strips



Optional Three Bedroom Plan

- Pre-wired for monitored security system
- Pre-wired for cable T.V.